

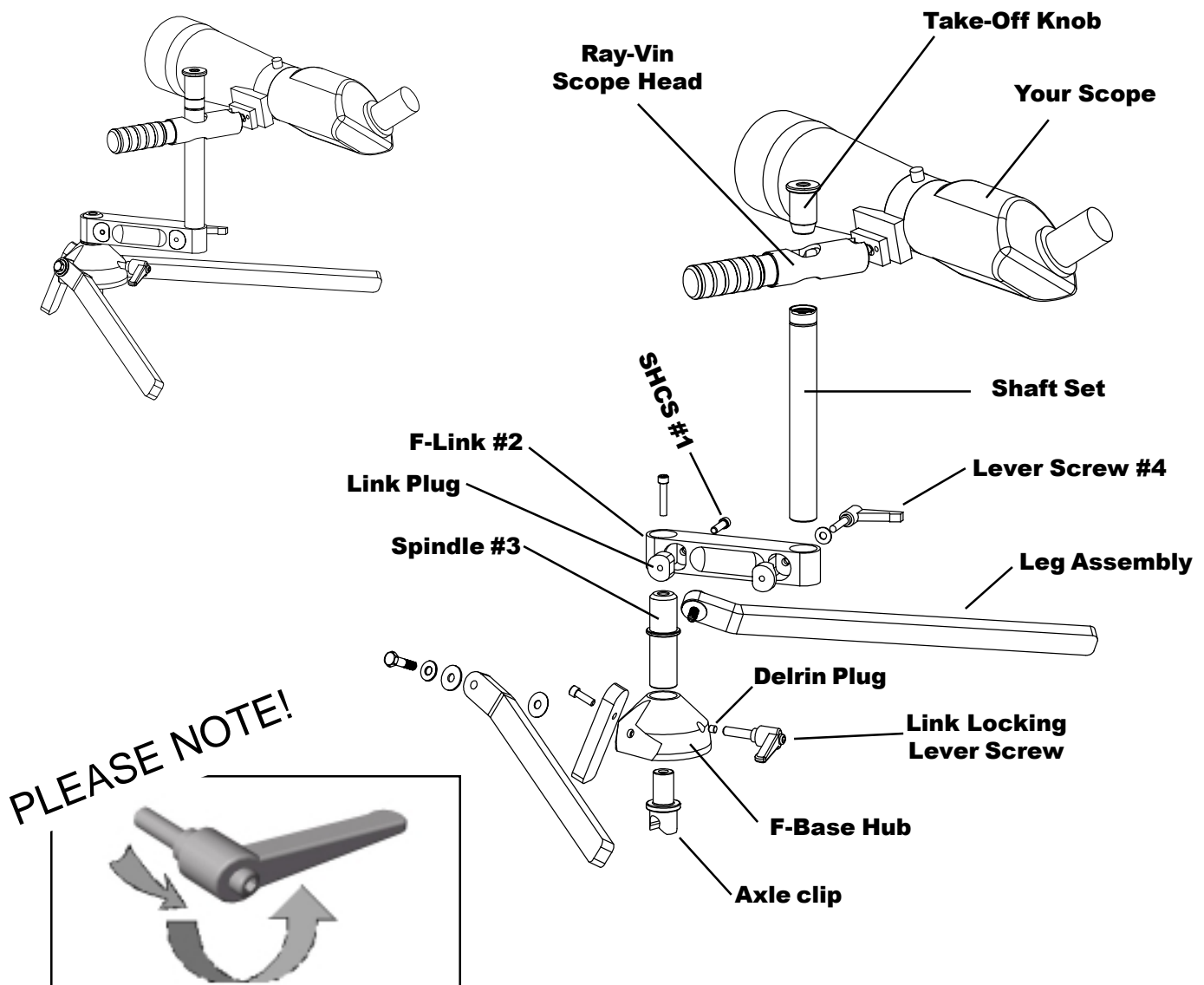
Depending on the shaft set you ordered with your F-Base, your base may require some assembly.

1. Loosen the SHCS (Socket Head Cap Screw) #1 until you can put the F-Link #2 onto the Spindle #3.
2. With the F-Link down against the spindle shoulder, tighten SHCS #1.
3. Loosen the lever screw #4 until you can slide your scope rod into the F-Link.
4. With the rod end flush with the bottom of the F-Link, tighten the lever screw.

You can pivot the link in the base, pivot the head on the rod and pivot your scope on the ball.

These degrees of freedom allow you to position your scope right at your eye when in the prone position.

Without moving your head off the gun, you can make a last second check of conditions before breaking your shot.



**PLEASE NOTE!**

To reposition the lever handle, pull it out, rotate to desired position and release.

**Do not use allen wrench in screw!**